

The MP-I

Cartridge Hydraulic Pressure Intensifier

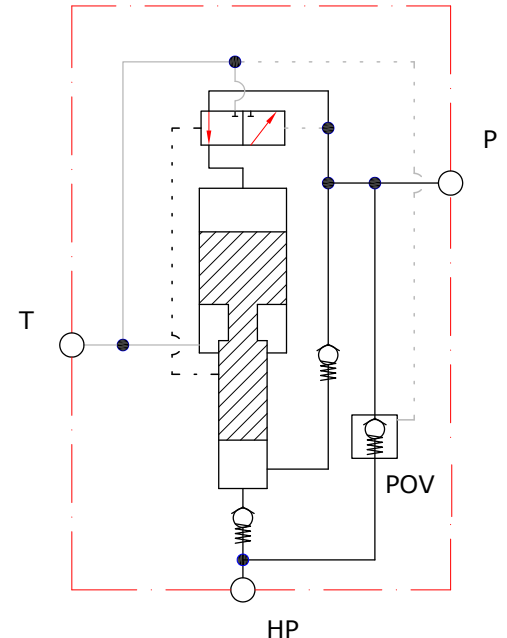
Function:

The MP-I is a cartridge type intensifier, designed to be screwed into a cavity in a hydraulic manifold. It will automatically increase a supplied pressure to a higher end pressure, and maintain this. The higher pressure is generated only in the circuit after the intensifier, and will not influence the control valves upstream, which only have to be rated at pump pressure.

Alle needed high pressure valves including a p.o. check valve POV are integrated in the MP-I. To activate the POV the supplied pressure must be diverted to the T-port of the intensifier, and the P-port connected to tank. This will open a passage directly from the HP-port to tank, discharging the high pressure.



Hydraulic Diagram:

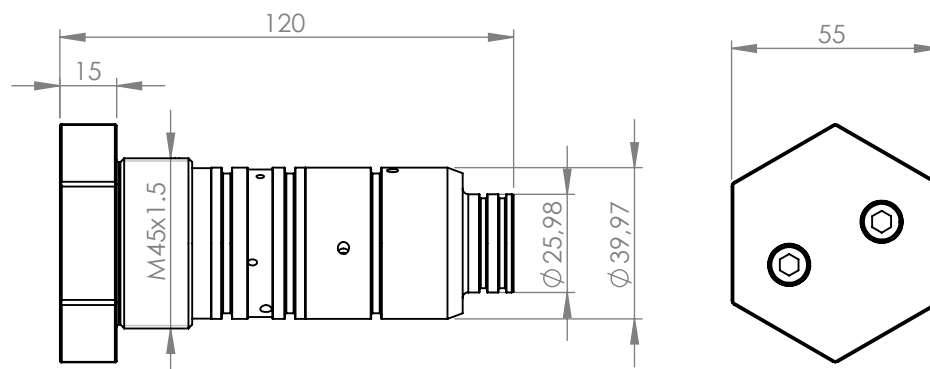


Features:

- No tubing required
- End pressure range up to 500 bar / 7,250 psi
- Generates higher pressure only downstream of the intensifier
- Components up stream of the intensifier only need rating to pump pressure
- Reciprocating - continuously delivers flow during pressure build-up
- All high-pressure valves are integrated
- Ratios available: 2:1 ; 3:1 ; 4:1 & 5:1



Dimensions:





ScanWill®
More Pressure. More Power

Cavity Dimensions:

