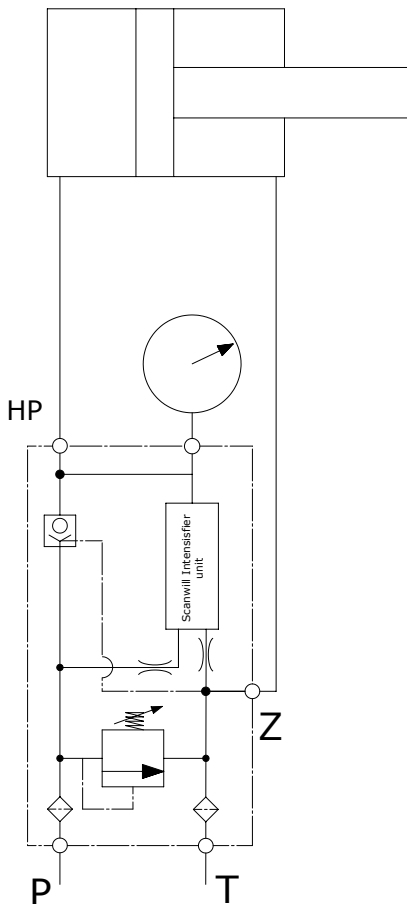


Scanwill Intensifier Solution Series SIS-34

Technical Data:

- Inlet flow: Min. 5 LPM to max. 100 LPM
- Inlet pressure: Min. 10 bar to max. 200 bar*
* Depending on the ratio
- Outlet Pressure: Variable 50 to 800 bar**
** Depending on the chosen ratio and setting of the inlet pressure
- Connections: G3/8" all ports
- Materials: Cast iron & steel
Available in stainless steel
- Filtration requirement: Min. 10 micron nominal
200 micron strainers integrated



Connecting the SIS-34

Before installing make sure the surroundings and connecting parts are clean.

- P: To be connected to pump supply
- T: To be connected to tank line
- Z: To be connected to the low pressure side of the cylinder
- HP: To be connected to the high pressure side of the cylinder

The SIS-34 Range:

Ratio	Max. inlet pressure (bar)	Max. outlet pressure (bar)	Product code
1,8:1	200	360	SIS-34-1.8
2.1:1	200	420	SIS-34-2.1
2.6:1	200	520	SIS-34-2.6
3.4:1	200	680	SIS-34-3.4
4.0:1	200	800	SIS-34-4.0
5.0:1	160	800	SIS-34-5.0
7.0:1	114	800	SIS-34-7.0

