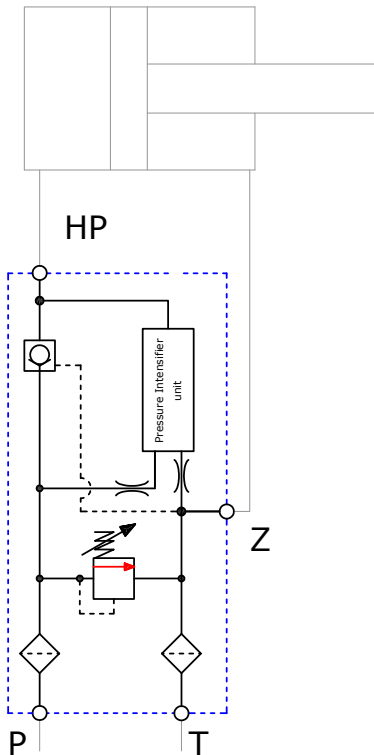


# Scanwill Intensifier Solution Series SIS-52

## Technical Data:



Inlet flow:	Min. 2 LPM to max. 20 LPM
Inlet pressure:	Min. 10 bar to max. 200 bar* * depending on the chosen ratio
Outlet Pressure:	Variable 210 to 3,000 bar** **depending on the chosen ratio and setting of the inlet pressure
Connections:	G1/4" all ports, HP port with 120° cone sealing
Materials:	Cast iron & steel Available in stainless steel
Filtration requirement:	Min. 10 micron nominal 200 micron strainers integrated

## Connecting the SIS-52

Before installing make sure the surroundings and connecting parts are clean.

- P: To be connected to pump supply
- T: To be connected to the tank line
- Z: To be connected to the low pressure side of the cylinder
- HP: To be connected to the high pressure side of the cylinder

## The SIS-52 Range:

Ratio	Max. inlet pressure (bar)	Max. outlet pressure (bar)	Product code
7.0:1	30 - 200	210 - 1,400	SIS-52-7.0
10.0:1	30 - 200	300 - 2,000	SIS-52-10.0
13.0:1	30 - 200	390 - 2,600	SIS-52-13.0
16.0:1	30 - 188	480 - 3,000	SIS-52-16.0

